

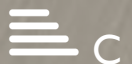
CHARMILL

RESIDENTIAL



Randolph Mews, Little Venice W9

£1,730



Randolph Mews



Description

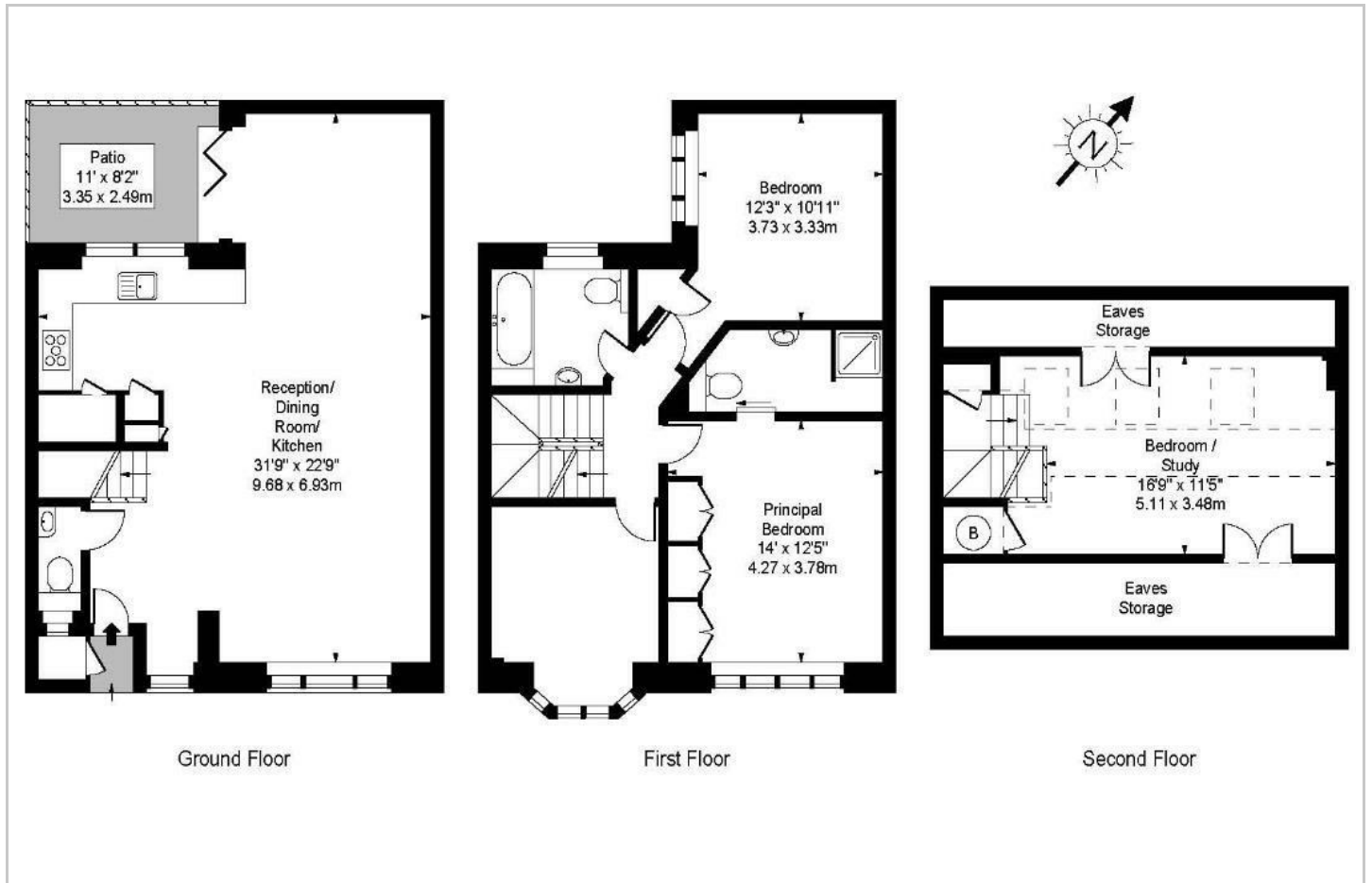
A recently refurbished mews house arranged over three floors in the heart of Little Venice. This beautiful house comprises a spacious open plan kitchen/reception room leading onto a private patio, generously proportioned principal bedroom with en suite shower room, three further bedrooms and a family bathroom suite. The house further benefits from a secure lock up garage.

- Four bedrooms
- Guest WC
- Patio
- Two bathrooms
- Wooden flooring
- Single garage

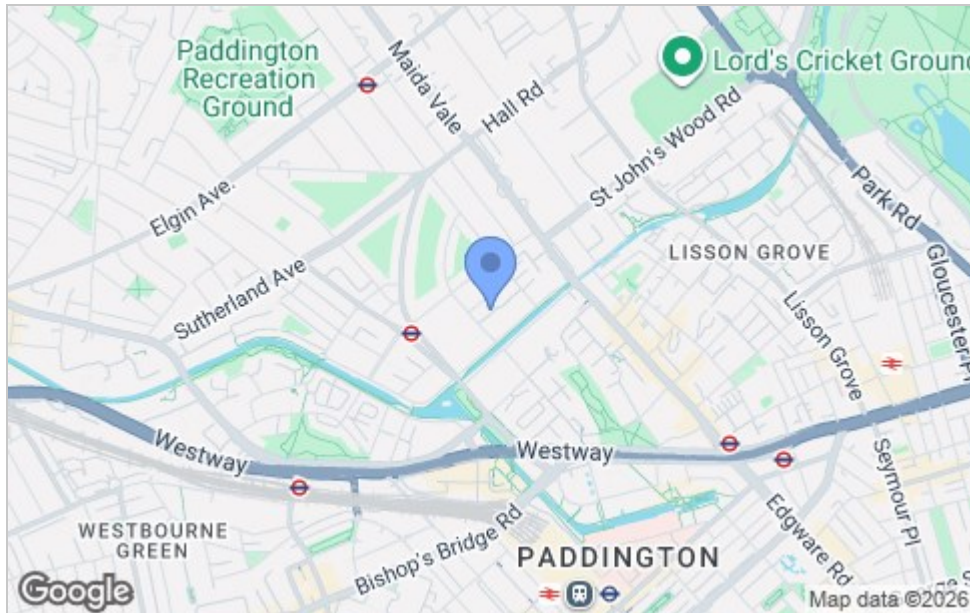




Floor Plan



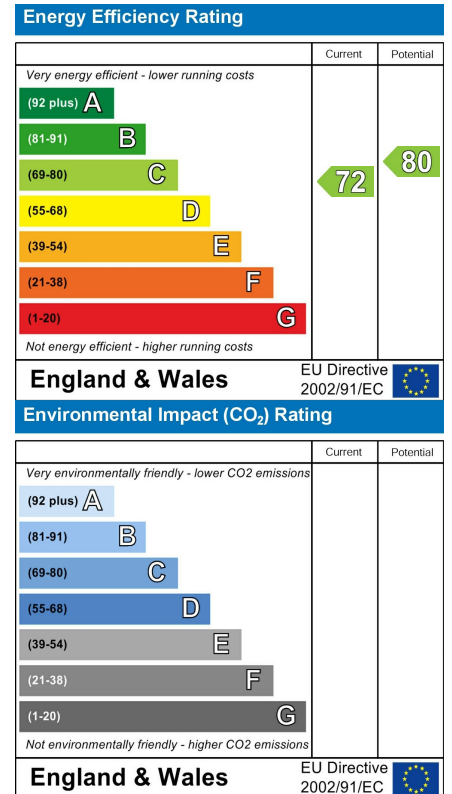
Area Map



Viewing

Please contact us on 020 7046 6275 if you wish to arrange a viewing appointment for this property or require further information.

Energy Efficiency Graph



These particulars, whilst believed to be accurate are set out as a general outline only for guidance and do not constitute any part of an offer or contract. Intending purchasers should not rely on them as statements of representation of fact, but must satisfy themselves by inspection or otherwise as to their accuracy. No person in this firm's employment has the authority to make or give any representation or warranty in respect of the property.

020 7046 6275 • sales@chamillresidential.co.uk • 51 Maida Vale, Little Venice, London W9 1SD
 charmillresidential.co.uk